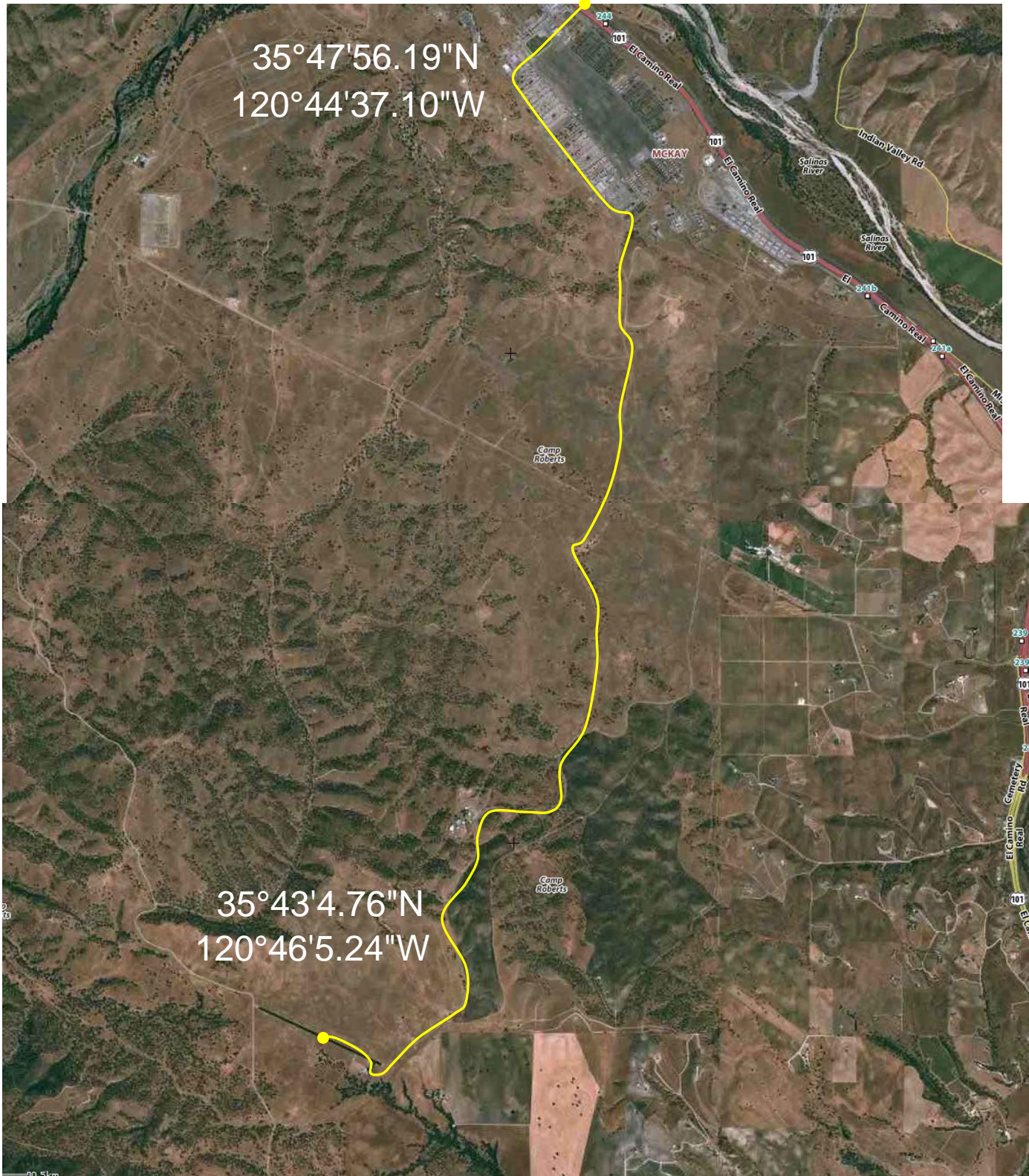


Way to McMilan Airfield

35°47'56.19"N
120°44'37.10"W

35°43'4.76"N
120°46'5.24"W



Camp Robert Entrance

Upon entering Camp Roberts, you will need to stop by the Pass and ID building to your right, showing them your Driver License and telling that you are going to McMillan Airfield / CIRPAS (PoC - Ray Jackson) for NPS experiments. Having your pass issued, proceed to the guard and further on to the East Perimeter Rd.



McMillan Airfield

When arrived, you need to stop by the buildings and ask for the Air Boss, who will clear you to drive along the runway to the Arcturus/Snowflake launch side (midfield).

These are the huge satellite dishes, you will not miss the passing by.

